

The annual, international conference on:

Impact of Science

*Stimulating societal impact of science by building stronger,
long-term structures for knowledge and data exchange,
as well as Public-Private collaboration*

22-24 June 2022

Leiden, the Netherlands

AESIS

NETWORK FOR
ADVANCING & EVALUATING THE SOCIETAL IMPACT OF SCIENCE

In partnership with:



**Leiden
Kennisstad**



impact services

**LEIDEN
CONVENTION
BUREAU**



ABOUT AESIS

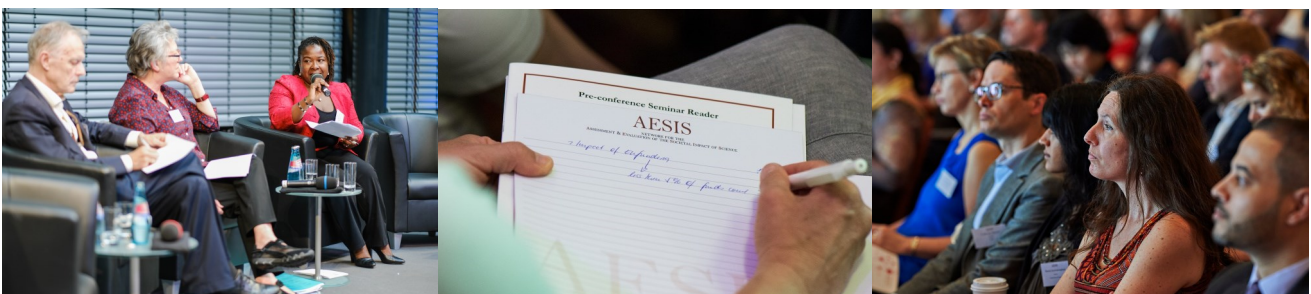
The Network for Advancing and Evaluating the Societal Impact of Science (AESIS) is an international, open community for professionals working on stimulating and demonstrating the impact of science on economy, culture and well-being. Members come from all over the world, where they are involved in the evaluation of impact, research strategy and policy making, science funding, scientometrics, research administration, business creation, public engagement, and many more. We pursue a multi-stakeholder, system-wide approach on an international level, because we believe that stimulating dialogue between different sectors and regions, beyond the project level, will catalyse further development of effective instruments for evaluating and advancing the societal impact of science.

WHY THIS CONFERENCE

The need for science to tackle challenges our world faces is not a new phenomenon, but has increasingly grown on a global scale, with the world facing pandemics, environmental changes and societal struggles. Policymakers, businesses and other societal actors are increasingly aware of the value of scientific data and knowledge to support them in overcoming challenges, but in many cases the interaction between worlds is not structured or stable enough. For the 10th time in a row AESIS will be organising their annual conference on Societal Impact of Science, to bring together stakeholders in- and outside of the science eco-system to engage with each other on the most effective and approaches for implementing policies, strategies, methods and tools to optimise societal impact of science and evaluate success.

This year the international conference will be hosted in Leiden, the Netherlands. For many years initiatives have existed and been developed to build a strong infrastructure of collaboration between scientific institutions and societal actors, between public and private organisations, with the purpose of increasing interaction and mutual benefits. Researchers and policy makers have recently started building a more permanent structure to create alliances for impact, meanwhile strong collaboration between industry and science has existed in the thematic clusters called Topsectors for years. The Research Council of the Netherlands has been greatly investing in the Dutch Research Agenda (NWA) and the VSNU continues improving their evaluation of scientific relevance in their Strategy Evaluation Protocol. These are only a few of the examples of good-practices and expertise that convinced AESIS to invite everyone to the Netherlands for this conference.

This conference will feature highly regarded and internationally recognised experts who will be discussing the contribution of research to the quality of life and well-being. The conference expects over 350 participants from more than 30 countries, bringing together experts such as R&D evaluators, university managers, research councils, policy makers, funders, and other stakeholders of impact. The goal is sharing, evaluating, and discussing best practices around the world on: policy strategies for societal impact, creating (long-term) alliances between stakeholders; regional, national, and international instruments for evaluating and achieving impact; current issues on i.e. public engagement, evidence-based policy, interdisciplinary approaches, and, harmonising definitions and assumptions. We are very excited to be working with our colleagues in the Netherlands and else where in the world to create the most valuable programme and experience for all of you who would like to learn about and contribute to science transforming the world. And we very much look forward to meeting you there!



ADVISORY & ASSOCIATION

AESIS Advisory Board

Koenraad Debackere	Executive Director of KU Leuven Research and Development & Chairman of Board of Directors of KBC Group NV, Belgium
Beverley Damonse	Executive of Science Engagement and Corporate Relations, National Research Foundation (NRF), South Africa
Luke Georghiou	Vice-President for Research and Innovation and Professor of Science and Technology Policy at the University of Manchester, United Kingdom
Barend van der Meulen	Professor Institutional Aspects of (Higher) Education, Director CHEPS, Twente University, the Netherlands
Andrew Plume	Senior Director of Research Evaluation at Elsevier, United Kingdom
Susan Renoe	Assistant Vice Chancellor, University of Missouri & Executive Director of the NSF Center for Advancing Research Impact in Society, United States
Toby Smith	Vice President of Policy at the American Association of Universities, USA
David Sweeney	Executive Chair, Research England, United Kingdom
Paul Wouters	Dean of Social and Behavioural Sciences & former Director of CWTS, Leiden

Programme Advisory Committee

Michiel Roelse	Director of Operations at the Topsector Horticulture & Starting materials, the Netherlands
Petra Ullrich	Regional Marketing Director for Europe, Elsevier
Wendy Reijmerink	Senior Strategist, ZonMw, the Netherlands
Wilfred Mijnhardt	Policy Director RSM at Rotterdam School of Management, Erasmus University
Nieke Campagne	Senior Advisor Strategic Collaboration & Public Affairs, Leiden University



LOCATION

Leiden European City of Science 2022

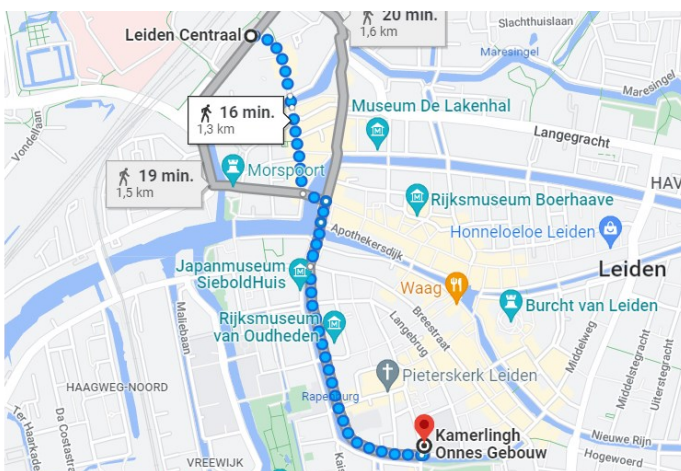
Leiden European City of Science 2022 is a 365-day science festival packed with activities, lectures, workshops, excursions, exhibitions, and events, for anyone with a curious mind. In 2022, Leiden will be the Dutch stage of the European scientific world. The major issues of our time will be discussed during countless conferences and special meetings. Simultaneously, with and for residents of the city and region, we will design an exciting program in which every day is centred around a different, intriguing topic. The ultimate goal of Leiden European City of Science is to connect science and society. Naturally, AESIS is excited to be part of this programme.

VENUE



Leiden University is a public research university in Leiden. It is the oldest as well as one of the most reputed institutions of higher education in the Netherlands and was founded in 1575 by William of Orange. When William of Orange first proposed the university's founding, he described it as 'a firm stronghold for the whole country.'

The Kamerlingh Onnes Building (KOG) was built in 1859 in the city of Leiden. Originally a physics laboratory, the KOG now houses Leiden University's Faculty of Law after several new buildings were added and a complete renovation in 2004. In 2008, the KOG was chosen as the most beautiful example in Leiden of an existing building that has been given a new purpose.



Getting to the KOG from Leiden Central Station

By walking (20 mins)

The KOG is easily reachable on foot from Leiden Central Station via a scenic walk through the city.

By public transport (10 mins)

From **platform A** you may take **Bus 6, 169, 182, or 400**. From stop '**Leiden, Breestraat**' the KOG is a 5-minute walk.

Wednesday 22 June

Times in CEST (GMT +2)

9.00-9.30

WALK IN & REGISTRATION

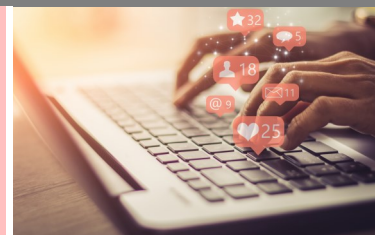


You are welcomed at the entrance and coffee and tea are served upstairs

- KOG -

The conference app is available and the helpdesk is open for any technical issues or support

- Online platform -



9.30-9.40

WORDS OF WELCOME

- C131 -

9.30 Conference Co-Chair:
Paul Wouters Dean of Faculty of Social & Behavioural Sciences & Professor of Scientometrics, Leiden University, the Netherlands

9.40-11.15

TRANSFORMING POLICIES AND STRATEGIES FOR IMPACT

- C131 -

This plenary session is an introduction into the power of research and its ability to transform and impact the society for the betterment of all actors involved. The speakers will consider the role of science and research in society, and the changing relationship between science and society, especially in current times.

9.40 **Jet Bussemaker** Professor Policy, Science and Societal Impact, Leiden University Medical Center & the Faculty Governance and Global Affairs, Leiden University, the Netherlands

9.55 **Sarah Bowman** Director of Strategic Engagement, Trinity College Dublin, Ireland

10.10 **Stephen Curry** Chair at the Declaration on Research Assessment

10.25 **Daya Reddy** Former President of the International Science Council

10.40 **Panel and Q&A** Chaired by Paul Wouters, with Jet Bussemaker, Sarah Bowman, Stephen Curry & Daya Reddy



11.15-11.45

BREAK

- Second floor -

Interact with fellow participants, speakers and partners while enjoying some refreshments

- Restaurant -

Learn more about the partners of this conference, without whom we wouldn't be here

- Exhibition area -



The app also allows for communicating with other attendees through chat

- Online Platform -

* to be confirmed

Wednesday 22 June

Times in CEST (GMT +2)

11.45-13.00

COLLABORATION BETWEEN SCIENCE & SOCIETY FOR GREATER IMPACT

Clusters with Industry & Business Development for Impact

- B031 -

How can science, policy and the business sector collaboratively address social challenges? & How to become a responsible entrepreneur for impact and develop research-based business practices?

Michiel Roelse (Chair)

Operational Director of Topsector, the Netherlands

Mike Smith

Emeritus Professor of Medical Science & Managing Partner at Harper Keeley, UK

Eva Garcia Muntion

Managing Partner at Research, Technology Development & Innovation (RTDI), Spain

Evidence-informed Policymaking

- C131 -

How society can benefit from innovative and well-substantiated methods for mission-oriented communication of science through evidence informed policy making

Matthew Flinders (Chair)

Professor of Politics, Department of Politics and International Relations, University of Sheffield, UK

Kristian Krieger

Policy Officer at European Commission, Belgium

Gowri Gopalakrishna

Epidemiologist & Public Health Policy Scientist, Amsterdam University Medical Centers, the Netherlands

Regional Collaboration

- C006 -

How can producers and users of scientific information collaborate within a region to generate effective impact on society

Lara Ummels (Chair)

Knowledge Broker at Leiden Kennisstad, the Netherlands

Alex Chaix

Deputy Director of Commercialisation of Research, UK Research & Innovation, UK

Claire Nauwelaers

Science, Technology & Innovation Policy Expert, Belgium

& Richard Harding

Independent expert – EU Cohesion Policy Funds and Green Transition, Romania

Tackling the Fundamentals of Science Structures

- B014 -

Societal impact & engagement as central in research processes, policies & strategies, and its implications for the science eco-system

Shanthi Ramanathan (Chair)

Health Research Economics Impact Assessment Specialist HMRI, Australia

Leonie van Drooge*

Senior Project Manager, the Centre for Science & Technology Studies, the Netherlands

Robert-Jan Smits*

President, Executive Board, Eindhoven University of Technology, the Netherlands

Community Engagement & Citizen Science

- B020 -

How engaging citizens and local communities in research processes and activities can help optimise the impact of science on society

Rajesh Tandon (Chair)

Founder & President of PRIA & UNESCO Co-Chair in Community Based Research and Social Responsibility in Higher Education, India

Pen-Yuan Hsing

Research Associate, Department of Mechanical Engineering, University of Bath, UK

Sarah Bowman

Director of Strategic Engagement, Trinity College Dublin, Ireland

13.00-14.00

LUNCH BREAK AND GOOD-PRACTICES OF IMPACT

- Second floor -

During this lunch buffet you have the chance to learn about good-practices of science having impact on society, several researchers and their partners in society will tell you about their experiences and the outcomes of their collaboration. We work hard on strengthening structures, policies, strategies and methods for impact, so enjoy the success stories!

* to be confirmed

Wednesday 22 June

Times in CEST (GMT +2)

15.30-16.30 **TOUR THROUGH HORTUS BOTANICUS** (pre-registration required)



Rapenburg 73, Leiden

The Hortus Botanicus of Leiden is the oldest botanical garden of the Netherlands. The Hortus botanicus Leiden was founded by Leiden University in 1590, on the site of the current Front Garden. The first planting dates from 1594. The Hortus was continuously expanded in the course of the following centuries and the planting has undergone many changes, but many of the trees that were planted during the past 400 years can still be admired today.

16.30-18.00 **WELCOMING RECEPTION AT HORTUS BOTANICUS**

Rapenburg 73, Leiden

Celebrate the Welcoming Reception for our Impact of Science conference at the beautiful and historically significant Hortus Botanicus.



18.30-21.00 **CONFERENCE DINNER** (pre-registration required)



Trattoria Italiana City Hall

Stadhuisplein 3, Leiden

Trattoria Italiana City Hall is located in the historic town hall in the middle of the lively heart of Leiden. A place with at least as much character as the iconic building overlooking the famous Nieuwe Rijn. Here we welcome you for a delicious walking dinner.



Thursday 23 June

Times in CEST (GMT +2)

9.00-9.30

WALK IN & REGISTRATION



You are welcomed at the entrance and coffee and tea are served upstairs

- KOG -

The conference app is available and the helpdesk is open for any technical issues or support

- Online platform -



9.30-9.40

WORDS OF WELCOME

- C131 -

Conference Co-Chair:

9.30

Heidi van Rooyen

Group Executive: Impact Centre & Acting DCEO Research, Human Sciences Research Council, South Africa

9.40-11.00

MOST PROMINENT OBSTACLES FOR IMPROVING SOCIETAL IMPACT OF SCIENCE

- C131 -

At the start of the debate the audience can vote between 8 to 10 questions or statements that the panelists have brought forward in their presentation. The top 3 will be debated by the panel members

9.40

James Wilsdon

Director, Research on Research Institute (RoRI), Sheffield University, United Kingdom

9.50

Robert-Jan Smits

President, Executive Board, Eindhoven University of Technology, the Netherlands

10.00

Kathryn Graham

Executive Director, Alberta Innovates, Canada

10.10

Fulufhelo Nelwamondo

Chief Executive Officer, National Research Foundation, South Africa

10.20

Interactive Panel



11.00-11.30

BREAK

- Second floor -

Interact with fellow participants, speakers and partners while enjoying some refreshments

- Restaurant -

Learn more about the partners of this conference, without whom we wouldn't be here

- Exhibition area-



The app also allows for communicating with other attendees through chat

- Online Platform-

* to be confirmed

Thursday 23 June

Times in CEST (GMT +2)

11.30-12.45 DEMONSTRATING & EVALUATING SOCIETAL IMPACT OF SCIENCE

Aligning Indicators and Incentives to Amplify Impact - C131 -

How to conduct impact assessment while preventing the mismatch between what is required and what is rewarded, and which metrics can effectively demonstrate the impact of research?

James Wilsdon (Chair)

Director,
Research on Research Institute (RoRI),
Sheffield University, UK

Shanthi Ramanathan

Health Research Economics Impact
Assessment Specialist
HMRI, Australia

Andrew Plume

Vice President of Research Evaluation at
Elsevier, UK

Developing an Institutional Impact Profile - C006 -

Patrick Cramers (Chair)*

Director of Life Sciences & Chemistry,
University of Applied Sciences Utrecht, the
Netherlands

Barend van der Meulen*

Head of Research,
Rathenau Institute,
the Netherlands

Societal Impact & Funding - B014 -

Current methodologies and tools through which impact is evaluated and initiatives to improve impact sections within funding applications

Fulufhelo Nelwamondo (Chair)

Chief Executive Officer, National Research
Foundation, South Africa

Judith de Kroon*

Member of Home Evaluation of portfolio of
research institutes of NWO and KNAW
Committee, the Netherlands

Marion Boland*

Head of Research Policy,
Science Foundation Ireland

National & Regional Evaluation Systems - C004 -

How to create or strengthen a science assessment framework that is appropriate on the regional or national scale in which multiple institutions are involved by incentivising for societal impact

Steven Hill (Chair)

Director of Research, Research England,
UKRI, UK

Chris Brink

Former Vice-Chancellor, Newcastle University (UK)
& Chair of the 2020 Research Assessment Exercise
Group, University Grants Committee, Hong Kong

Marta Natalia Wróblewska

Assistant Professor at SPWS University, Poland

Methods & Tools for Assessment - B020 -

What are the latest developments in methods and tools for demonstrating societal impact of science to create more structured insight in impact-performance

Kathryn Graham (Chair)

Executive Director, Impact Action Lab at Alberta Innovates

Laurens Hessels

Senior Researcher, Rathenau Institute & Professor by special
appointment, Centre for Science & Technology Studies,
Leiden University, Netherlands

Eiríkur Smári Sigurðarson

Research Specialist at University of Iceland, Iceland

Sean Newell

Chief Executive Officer, Researchfish & Interfolio, UK

12.45-13.45 LUNCH BREAK AND GOOD-PRACTICES OF IMPACT

- Second floor -

During this lunch buffet you have the chance to learn about good-practices of science having impact on society, several researchers and their partners in society will tell you about their experiences and the outcomes of their collaboration. We work hard on strengthening structures, policies, strategies and methods for impact, so enjoy the success stories!

* to be confirmed

Thursday 23 June

Times in CEST (GMT +2)

13.45-14.45 **ROUNDTABLE SESSIONS (max. 20 participants per session, only on site)**

Interdisciplinarity & Building Teams

- B014 -

Building teams between disciplines and supporting staff to combine the talents needed to generate impactful research and address societal challenges

James Wilsdon

Director, Research on Research Institute (RoRI), Sheffield University,
United Kingdom

Eiríkur Smári Sigurðarson

Research Specialist at University of Iceland, Iceland

Open Science & Societal Impact

- B020 -

How can Open Science be a catalyst for strengthened engagement between science and society and facilitate positive impact of science

David Sweeney

Executive Chair, Research England, UK

Pen-Yuan Hsing

Research Associate, Department of Mechanical Engineering, University
of Bath, UK

Co-creation for Excellence & Impact

- C006 -

How can engaging with societal stakeholders in two-way exchange and involvement of community partners in the research process generate impact and excellence

Joana Magalhaes

Senior Researcher, Science for Change, Spain

Wija Oortwijn

Associate Professor at LUMC, the Netherlands

(Big) Data, Algorithms, & Impact

- C004 -

Katerine Weisteen Bjerde *

Director of Research Service Strategy, UNIT, Norway

Science Friction

- C131 -

!!! Starts at 13.30 !!!

Documentary viewing (participation unlimited):

Those TV documentaries you see, and the science experts they feature? Did you know that producers often deceptively edit them and twist their words, to make them say the opposite of what they actually said? Science Friction sets the record straight.

From Skeptoid Media. Directed by Emery Emery, produced by Brian Dunning.

14.45-15.15 **REFRESHMENTS BREAK**

15.30-17.00 **BOAT TOUR OF LEIDEN (Pre-registration required)**



Bootjes & Broodjes, Blauwpoortsbrug 1

Explore the beautiful city of Leiden by boat, and learn about its incredible history.

18.00-20.00 **CONFERENCE DINNER (Pre-registration required)**

**Stadscafé Van der Werff
Steenstraat 2, Leiden**

Stadscafé Van der Werff forms the gateway to the old city centre..
Here we will come together to enjoy an informal barbecue.



* to be confirmed

Friday 24 June

Times in CEST (GMT +2)

9.00-9.30

WALK IN & REGISTRATION



You are welcomed at the entrance and coffee and tea are served upstairs

- KOG -

The conference app is available and the helpdesk is open for any technical issues or support

- Online platform -



9.30-10.00

WORDS OF WELCOME

- C131 -

9.30 Conference Co-Chair:
David Sweeney Executive Chair of Research England, UK

9.40 Recommendations of the parallel session (part 1)

10.00-11.15

STIMULATING COLLABORATION AND EFFECTIVENESS FOR IMPACT WITHIN THE SCIENCE ECO-SYSTEM

- C131 -

What policies are required by different organisations and insituitons in order to implement and provide a coherent and inclusive science eco-system that allows transformative and impactful research in society. And how can these policy perspectives be coordinated to achieve coherence.

10.00 **Nico L.U. van Meeteren** Executive Director and Secretary General of Topsector Life Sciences & Health & Professor, Dept. Anesthesiology, Erasmus Medical Center, Rotterdam, the Netherlands

10.15 **David Phipps** Assistant Vice President Research Strategy and Impact, Division of Vice-President Research & Innovation, Office of Research Services, York University, Canada

10.30 **Yuko Harayama** Former Executive Director of International Affairs at RIKEN, Japan

10.45 **Interactive Q&A** Panel with: Nico L.U. van Meeteren, David Phipps & Yuko Harayama



11.15-11.45

BREAK

- Second floor -

Interact with fellow participants, speakers and partners while enjoying some refreshments

- Restaurant -

Learn more about the partners of this conference, without whom we wouldn't be here

- Exhibition area-



The app also allows for communicating with other attendees through chat

- Online Platform-

* to be confirmed

Friday 24 June

Times in CEST (GMT +2)

11.45-13.00 DEVELOPMENTS FOR IMPROVING SOCIETAL IMPACT OF SCIENCE

Science Policy, Recognition & Rewards for Increasing Impact

- C006 -

What types of policies will incentivise impact and in what ways can recognition and rewards systems be adjusted to foster societal impact

Yuko Harayama (Chair)

Former Executive Director of International Affairs at RIKEN, Japan

Kim Huijpen

Programme Manager of Recognition & Rewards, Universities of the Netherlands

Institutional Strategy & Leadership

- C131 -

Development and implementation of institutional strategies that integrate societal impact, and overcoming current and possible obstacles and challenges

David Phipps (Chair)

Assistant vice-president Research & Innovation at York University
& Director of Research Impact Canada, Canada

Igor Campillo Santos

Executive Director, Euskampus Foundation, Basque Country

Esther de Smet

Senior Research Policy Advisor, Ghent University, Belgium

Training & Skills for Societal Impact

- B014 -

Jennifer Brennan* (Chair)

Director of Research, Innovation & Engagement and EDI Lead, Technological Higher Education Association, Ireland

Elizabeth Halton

Director of UCL Doctoral School & Early Career Research Staff, UK

Thomas Estermann*

Director, Governance, Funding & Public Policy Development, European University Association

Impact on SDG's & Border-Crossing Challenges

- B020 -

What are strategies, policies and practices that may be supported or put in place to more effectively address global challenges and work towards the SDG's

Øyvind Paasche (Chair)

Head of the Climate Dynamics Department at NORCE, Norway

Inge Hutter

Rector of the International Institute of Social Studies & Academic Lead Erasmusian Values in Leadership and Culture for Strategy-2024 of the Erasmus University Rotterdam, the Netherlands

Bianca Vienni Baptista

Senior Researcher and Lecturer of the Transdisciplinarity Lab, ETH Zurich, Switzerland

Public Engagement & Science Communication

- B026 -

How can knowledge exchange benefit from better communication strategies and what are the obstacles and opportunities of (social) media in bridging the communication between science and society

Paul Manners (Chair)

Founding Director, National Co-ordinating Centre for Public Engagement, UK

Ger Hanley

Founder Write Fund, Republic of Ireland

Dariusz Aksamit

Head of Council of March for Science Foundation, Poland

13.00-14.00 LUNCH BREAK AND GOOD-PRACTICES OF IMPACT

- Second floor -

During this lunch buffet you have the chance to learn about good-practices of science having impact on society, several researchers and their partners in society will tell you about their experiences and the outcomes of their collaboration. We work hard on strengthening structures, policies, strategies and methods for impact, so enjoy the success stories!

* to be confirmed

Friday 24 June

Times in CEST (GMT +2)

14.00-15.30 **RECOMMENDATIONS FOR BUILDING STRONGER STRUCTURES FOR KNOWLEDGE EXCHANGE AND COLLABORATION IN SCIENCE ECO-SYSTEMS FOR IMPROVED SOCIETAL IMPACT**

14.00 **Recommendations of the parallel session (part 2) & ranking the recommendations**

14.25 Chair of the panel:

David Sweeney - Executive Chair of Research England, UK

The Panel:

Max Dumoulin - Vice President of Institutional Offerings at Elsevier, the Netherlands

Matthew Flinders - Professor of Politics, Department of Politics and International Relations, University of Sheffield, UK

Leonie van Drooge - Senior Project Manager, the Centre for Science and Technology Studies, the Netherlands

Rajesh Tandon - Founder and President of PRIA & UNESCO Co-Chair in Community Based Research and Social Responsibility in Higher Education, India

Marion Boland* - Head of Research Policy at Science Foundation Ireland

15.15 **Closing remarks by AESIS**

15.30 **CLOSING RECEPTION**

- Second floor -

**AESIS Raffle - Fill out our evaluation form & throw your badge into the raffle box to enter.
The winner will be announced at the end of the reception!**

**We hope you enjoy this final opportunity to engage during informal chats and drinks.
Thank you for being part of our conference!**

